

AUTUMN 2014

£4.50 \$10

BRIDGE FOR DESIGN



THE INTERNATIONAL RESOURCE FOR INTERIOR DESIGN



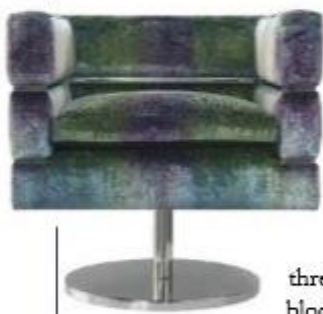
Alabaster jars were used in dedications to deities throughout the ancient world and often held precious treasures such as perfumes and honey. Master stonemasons, Lapidica have captured the beauty of these vessels in their range of hand-carved replica jars. The translucent qualities of the stone lend themselves to the creation of dramatic backlit displays in either singular or group formation.

T: +44 (0)203 012 1000 | www.lapidica.com



The Coleby Console from Halo harks back to an era of world travels with well worn and adored leather-bound travel trunks. Its handmade wooden frame is covered in a stone-coloured linen and is finished with natural leather edges and handles.

T: +44 (0)161 923 0500 | www.halo.com



The versatile and stylish Z-3 swivel chair by Nathan Anthony conveys beauty from every angle, floating easily in the room.

Designed with three distinct colour-blocked layers, the chair features a band of metal

between the upholstery zones. Its swivel base adds extra function and comfort and allows this delightful chair to become an eye-catching accessory.

T: 001 323 504 1315 | www.nafurniture.com



Made by Hickory White with the distinctive and inspiring sensibility of **Lillian August**, the Rand chest, available in a variety of finishes, is handcrafted in America and may be used in many settings throughout the home.

T: 001 828 322 2640
www.lillianaugustfinefurniture.com



Go natural this Autumn with Crucial Trading. Their Coir boucle natural is pure coconut fibres tightly woven to produce a rich yet rustic contemporary carpet.

T: +44 (0)156 274 3747
www.crucial-trading.com



One of the new introductions by **Taylor-King**, the English inspired Drayton sofa, is shown with optional front antique brass casters for added mobility. The neutral fabric with matching pillows lend a chic, fashionable look to its clean lines. Brass nail heads along the bottom lend a special detailing effect.

T: 001 828 632 7731 | www.taylorlorking.com



Sabine Sofa in leather,
50+ leathers available.
Design Tina Nicole™

NATHAN ANTHONY®

MADE IN THE USA

SECTIONALS | SOFAS | CHAIRS | UPHOLSTERED BEDS | DINING | OTTOMANS | FABRICS

Available at select Fine Furniture Retailers, Architectural Firms and to the Trade

© 2014 Nathan Anthony Furniture. All rights reserved. #nafurniture nathananthonyfurniture.com